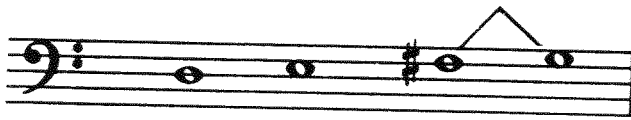


# NOTES ON THE D STRING

NAME \_\_\_\_\_

25



D      E      F#      G  
0      1      3      4

① Always use PENCIL!

DIRECTIONS:

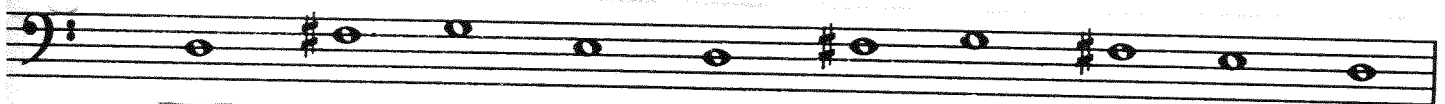
② Always write note names with CAPITAL LETTERS!

1. Write the letter names.

2. Mark the  $\frac{1}{2}$  steps. ( ^ )

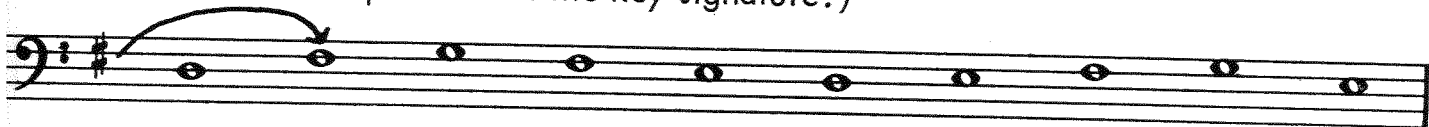


name E   D   E   F#   \_\_\_\_\_  
finger 1   0   1   3   \_\_\_\_\_



\_\_\_\_\_

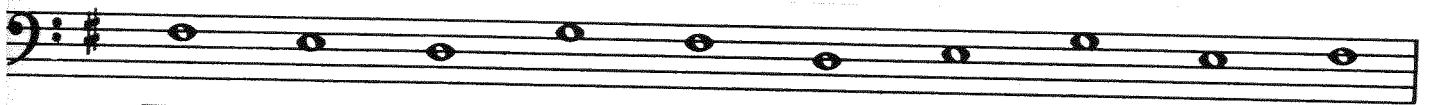
(Note that the sharp is now in the key signature.)



\_\_\_\_\_



\_\_\_\_\_



\_\_\_\_\_